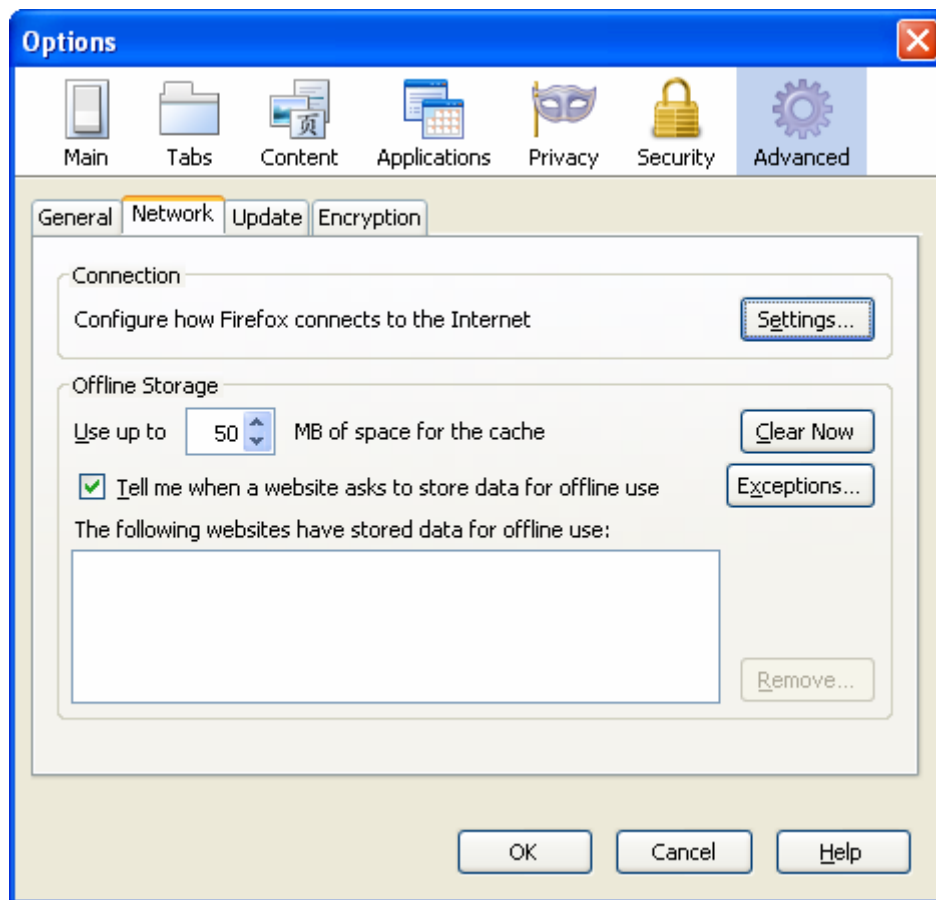
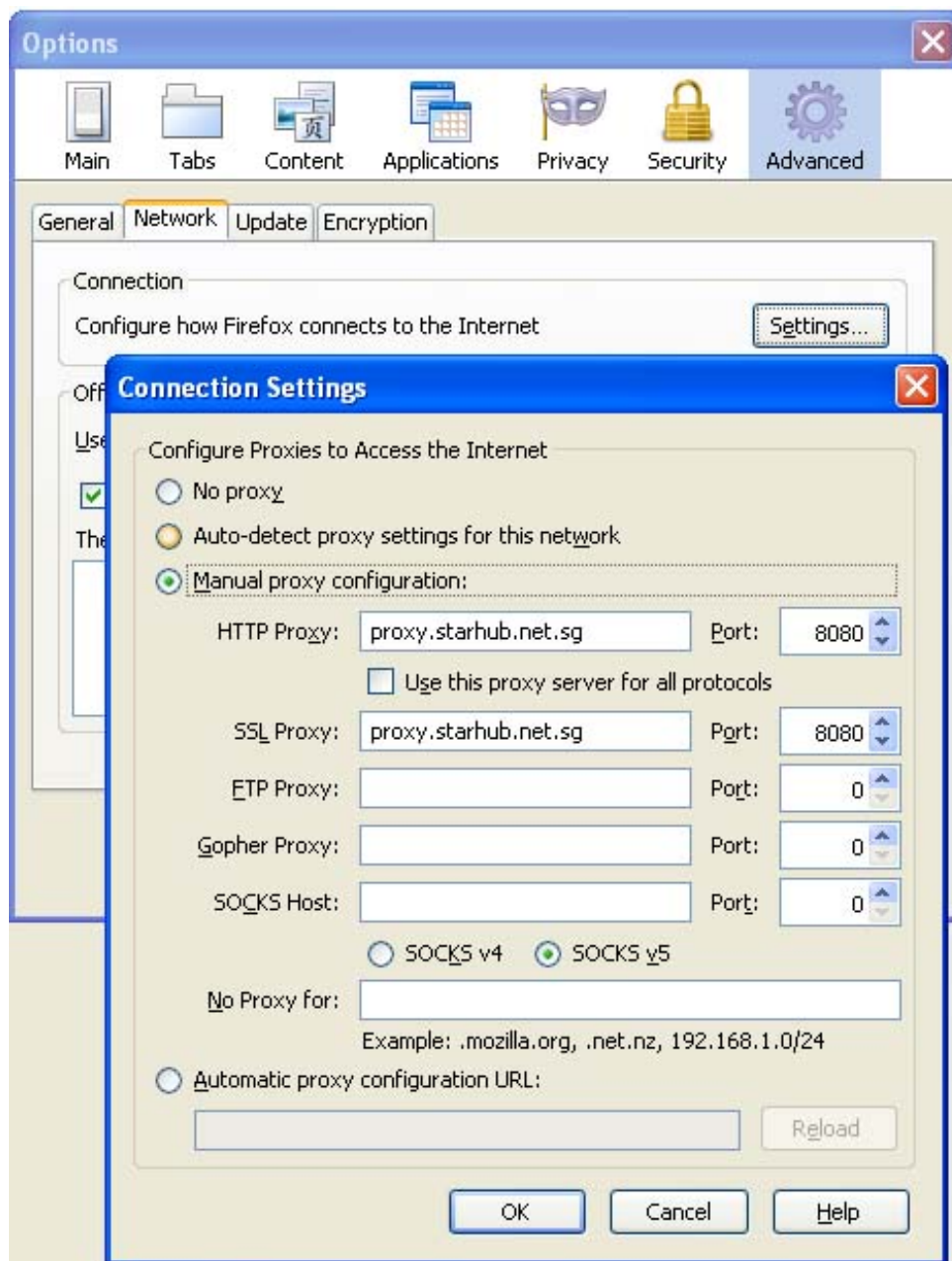


## Secure Sockets Layers (SSL)

If you are using Microsoft Internet Explorer browser, there is no need to configure your browser settings. If you are using Firefox browser to access our Online Services, please take the following steps to configure your browser settings:





**Note:**

Under the Types: HTTP Proxy and SSL Proxy, please enter the proxy of your Internet Service Provider (ISP). For example:

For Singnet users: **proxy.singnet.com.sg**, port number **8080**.

For PacificNet users: **proxy.pacific.net.sg**, port number **8080**.

For Starhub users: **proxy.starhub.net.sg**, port number **8080**.